

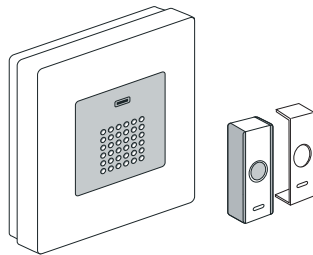
Door Chime/ 1700 • EXTRA RANGE - WIRELESS

Trådløs dørklokke / Trådlös dörrklocka / Langaton ovikello



2 YEAR WARRENTY

Congratulations with your new wireless door chime. This instruction manual explains the product and we advise you to read this carefully so that proper use is ensured. It is important to install this product in accordance with the fitting instructions below. Failure to do so may render your guarantee void. The instruction manual should be kept as long as the door chime is in use.



CONTENTS:

- Push Button and extra cover
- Chime
- 1 pcs. battery CR2032 (mounted in push button)
- Fittings
- Manual instruction Danish / English

FITTING INSTRUCTIONS:

- Before commencing work, you will require a drill and cross-headed screwdriver.
- 2 x AA size batteries
- Avoid positioning on UPVC Frames.
- Avoid positioning above heat sources such as radiators or in damp areas such as a kitchen or bathroom.
- Fixing screws and wall plugs are supplied with this kit.

Pressing the Push Button sends a wireless signal which activates the chime. The operating range is up to 150m (495ft. in open field) and you can use the chime virtually anywhere in the home or garden. However, the transmission range will be reduced if the signal is transmitted through a number of walls or ceilings and Metal or UPVC doorframes can also reduce the operating range.

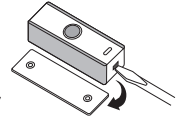
IMPORTANT: Before you drill any holes in the wall, please make sure there are not any cables or pipes that you may accidentally damage.

BATTERY INSTALLATION:

PUSH BUTTON UNIT:

Push button uses a 3volt CR2032 Lithium battery (included), to activate remove the isolation strip.

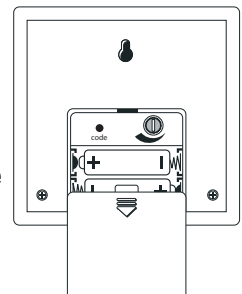
To replace open the push button (slide the flat screwdriver in the opening on the bottom and press the tab down) and replace ensuring correct battery polarity.



DOOR CHIME UNIT :

Remove the battery cover and insert 2 x 1.5v batteries (AA, UM3 & LR6 – not included); ensure battery polarity match the internal markings.

The door chime is now ready to learn the operation code (Please see Digital Code Set Up).



LOW BATTERY INDICATOR:

Red LED indicator will flash when the chime batteries need replacing.

ADJUST THE VOLUME:

Rotate the rotary volume knob on the back of the door chime unit to adjust the sound level.

IMPORTANT: Turn the volume knob with care, do not use excess force as it may break it.

INSTALLATION GUIDE:

To install you will require a drill and cross-headed screwdriver.

PUSH BUTTON UNIT:

Mount using the two holes at the back of push button. Mounting on UPVC or metal doorframe surfaces will reduce the broadcasting range.

DOOR CHIME UNIT:

Hang using the hole on the back of the unit. Avoid positioning on

UPVC Frames, above heat sources (e.g. radiator) or in damp areas such as a kitchen or bathroom. Test the Chime before drilling any holes to ensure unit is within operating range.

DIGITAL CODE SET UP:

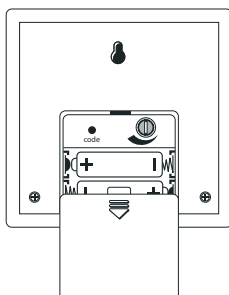
The Door Chime kit is equipped with advanced random and self-learning operation code ability.

• 1. First time operation (1st bell push):

After battery installation on both Push Button and Door Chime units, press the Push Button once to generate a new operation code. The Chime will sound to indicate that a new operation code is registered and memorized.

• 2. 2nd Bell Push:

Then press and hold the code setting button (in battery compartment) for about 1-2 second, the door chime unit will give a "beep" sound to indicate that it is ready for the new code registration. Press the 2nd push button once (within 5 seconds) to generate a new operation code randomly and send a wireless signal to the door chime unit which will sound to indicate that a second operation code is also registered and memorized.



• 3. Repeat the same procedure (pt. 2) for 3rd and 4th bell pushes or same series transmitter.

IMPORTANT: Repeat this procedure after changing the Push Button or Chime unit batteries.

NOTE: If the chime unit sounds for no reason, it is indicated that it has been interfered by other similar chime unit nearby, reset the digital code by remove the power supply from both units and rest for 10 seconds then repeat the digital code setup procedure.

DOOR CHIME OPERATION:

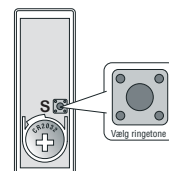
Press the button on the Push Button unit once, it sends a wireless signal to the Door Chime which will sound. The sound will stop as soon as the melody ends. For repeat sound, press the button again. Hold the button in will NOT repeat the sound.

MELODY SELECTION:

The selector is a small switch is located inside the Push Button in the middle of the battery compartment marked with "S". Press the switch to change to next melody of the 8 pre-stored:

Melodies:

- Westminster
- Ding Dong
- Ding Dong Ding
- Tubular 1
- Orchestra
- Tubular 2
- Trumpet
- Barking Dog



CONFORMATIES:

CE



RECYCLING:

Do not discard the unit with household waste, but in compliance with currently enforced regulations.

In compliance with the Directive 2002/96/CE relative to waste from electrical and electronic equipment (WEEE) this product must be recycled.



IMPORTANT:

- Door Chime unit is designed for indoor use only.
- Do not mount the Push Button onto any metal surface or UPVC doorframes, as this will reduce the operation range.
- Do not expose either unit directly to rain or immerse in water.
- Do not mount either unit close to fireplace or expose to high temperature.
- If leaving the chime for long periods, remove the battery from compartment to prevent leakage.
- Dispose of old batteries in accordance with the relevant legislation.
- **CAUTION:** Danger of explosion if battery is incorrectly installed or replaced.
- **IMPORTANT:** There are no serviceable parts in the units, do not attempt to repair it.
- **NOTE:** Extreme (Hot & Cold) temperature may shorten the operating range; re-locate the chime unit if necessary.
- **Note:** The product function may reset itself when it is subjected to electrostatic discharges. Just follow the instruction described in this manual to set the function again for normal operation.

USER HINTS:

If the door chime unit does not sound, please check the following:

- Flat batteries in either Push Button or Door Chime units – change the batteries.
- Wrong battery polarity in either Push Button or Door Chime units – reinsert the batteries.
- Both Push Button and Door Chime units are not on the same operation codes – reset the code (see digital code set up).
- B/O door chime unit does not register any operation code after batteries changed – reset the code (see digital code set up).
- Units are out of range – Operate the door Chime unit within the operation range.

TECHNICAL DATA :

Push Button unit:

Power: 1 x 3volt CR2032 Lithium battery (included)

Door chime unit:

Power: 2 x 1.5volt alkaline batteries ("AA", UM3 & LR6 – Not Included)

Operating Temperature: Bell Push: -5C – +35C
Door Chime: 10C – 35C

Operating Distance : up to 150m (495ft approx. – in open field & at suitable conditions)

Selectable Tone: Total Eight (8) tones available

Digital Code: Pre-set, one of two hundred fifty six (256) possible digital codes, random setting and non-selectable

Accessories: Extra Bell Push - Item no. 32408
Repeater - Item no. 32601 & 32CL05

R2 Device - device where the sound output is created by the initial operation of the control and where the period of sound output continues for the designed duration irrespective of condition of the control.

For more information - www.ensonordic.com

01.06.2017