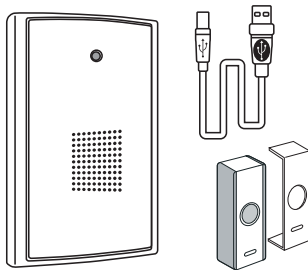


Door Chime/ 1900 • MP3 - WIRELESS

Trådløs dørklokke / Trådlös dörrklocka / Langaton ovikello

2 YEAR WARRENTY

Congratulations with your new wireless door chime. This instruction manual explains the product and we advise you to read this carefully so that proper use is ensured. It is important to install this product in accordance with the fitting instructions below. Failure to do so may render your guarantee void. The instruction manual should be kept as long as the door chime is in use.



CONTENTS:

- Push Button and extra cover
- Chime
- 1 pcs. battery CR2032 (mounted in push button)
- 1 USB cable for downloading musicfiles into door chime
- Fittings
- Manual instruction Danish / English

FITTING INSTRUCTIONS:

- Before commencing work, you will require a drill and cross-headed screwdriver.
- 2 x C size batteries
- Avoid positioning on UPVC Frames.
- Avoid positioning above heat sources such as radiators or in damp areas such as a kitchen or bathroom.
- Fixing screws and wall plugs are supplied with this kit.

Pressing the Push Button sends a wireless signal which activates the chime. The operating range is up to 150m (in open field) and you can use the chime virtually anywhere in the home or garden. However, the transmission range will be reduced if the signal is transmitted through a number of walls or ceilings and Metal or UPVC doorframes can also reduce the operating range.

IMPORTANT: Before you drill any holes in the wall, please make sure there are not any cables or pipes that you may accidentally damage.

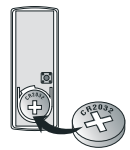
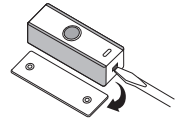


BATTERY INSTALLATION:

PUSH BUTTON UNIT:

Push button uses a 3volt CR2032 Lithium battery (included), to activate remove the isolation strip.

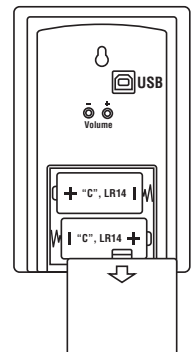
To replace open the push button (slide the flat screwdriver in the opening on the bottom and press the tab down) and replace ensuring correct battery polarity.



DOOR CHIME UNIT :

Remove the battery cover and insert 2 x 1.5v batteries (C, UM2 & LR20 – not included); ensure battery polarity match the internal markings.

The door chime is now ready to learn the operation code (Please see Digital Code Set Up).



LOW BATTERY INDICATOR:

Red LED indicator will flash when the chime batteries need replacing.

INSTALLATION GUIDE:

To install you will require a drill and cross-headed screwdriver.

PUSH BUTTON UNIT:

Mount using the two holes at the back of push button. Mounting on UPVC or metal doorframe surfaces will reduce the broadcasting range.

DOOR CHIME UNIT:

Hang using the hole on the back of the unit. Avoid positioning on UPVC Frames, above heat sources (e.g. radiator) or in damp areas such as a kitchen or bathroom. Test the Chime before drilling any holes to ensure unit is within operating range.

DIGITAL CODE SET UP:

The Door Chime kit is equipped with advanced random and self-learning operation code ability.

The Door Chime kit is equipped with advanced random and self-learning operation code ability.

1. First time operation:

After battery installation on both Push Button and Door Chime units, press the Push Button once to generate a new operation code. The Chime will sound to indicate that a new operation code is registered and memorized.

NB. The Chime unit has 2 minutes to learn the operation code after batteries are installed.

2. Interference from another chime operating nearby (i.e. Chime sounds for no reason):

Remove the batteries from the Push Button and Door Chime units and rest for 10 seconds, this will erase the memory. Insert the batteries and the units are ready for the new code registration.

3. Front and back door Push Button operation (2nd Push Button is not included):

- Remove the batteries from the Push Buttons (Front & Back Door) and Door Chime unit and rest for 10 seconds, this will erase the memory.
- Insert the batteries into the Push Buttons (Front & Back Door) and Door Chime unit, and the chime unit is ready for the new code registration.
- Press the front door push once, it will generate a new operation code randomly and send a wireless signal to the door chime unit which will sound to indicate that a new operation code is registered and memorized.
- Next (within 2 minutes) press the back door push button once, it will generate a new operation code randomly and send a wireless signal to the door chime unit which will sound to indicate that a second operation code is also registered and memorized.
- It is important to remember that when you replace your chime batteries that you will need to follow the same procedure of pairing the devices as above.

Important: Repeat this procedure after changing the Push Button battery.

NB: If the chime unit sounds for no reason during the digital code setting, it is indicated that it has been interfered by other

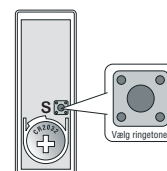
similar chime unit nearby, reset the digital code as per point 2 above.

MELODY SELECTION:

The selector is a small switch is located inside the Push Button in the middle of the battery compartment marked with "S". Press the switch to change to next melody of the 8 pre-stored:

Melodies:

- Westminster
- Ding Dong
- Ding Dong Ding
- Tubular 1
- Orchestra
- Tubular 2
- Trumpet
- Barking Dog



DOWNLOAD TO CHANGE MELODY

Firstly create a folder to store your music/melodies in MP3 or WAV format at your "Desktop". Connect the USB link with the door chime unit and your computer, the program will auto-run by itself, after then your computer will show the download program display.

Note: If the program does not start, double click MY COMPUTER; double click CDROM (with logo).

Program supports: Windows 2000, XP, Vista Windows 7, 8 and 10.

A Auto-Run: The program will auto-run by itself, after then your computer will show the download program display. "My Computer" column will show your "Desktop" programs/files.

Note: If the program does not start, double click My Computer then double click CDROM (with logo).

B Editing: MP3 or WAV files may need to be reduced in size to create an appropriate chime melody. Click your music/melody folder twice; the music/melody will be listed on the "Music" column. Select the music/melody that wants to edit by click it once, after then the music/melody sound wave will be displayed. Hold the left button on your mouse at the start of the selected section and drag your mouse to the end of selected section, then release the left button, the window at bottom right corner of the sound wave bar will show the duration time of this section. You can play the selected section by press the play button on the bottom left corner of the sound wave bar.

Remark: The door chime melody duration time should ideally be 8-15 seconds.

C Build up the Play List: After edited the music/melody, you can transfer it to the play list by click the large “Green Arrow” button in the centre once, the edited melody is imported to the Play List and displayed. You can build up total 8 different music/melodies on the Play List to replace the pre-stored melodies.

Remark: If the Play List already has 8 melodies stored, you have to delete 1 or more melodies from the Play List to make room before transfer the edited/new melody to the Play List.

D Play or Delete in the Play List: You can play or delete the edited music/melody on the play list. Click the music/melody once, the “Play”, “Stop” and “Delete” buttons will be appeared at the bottom of the Play List column, then click the “Play” or “Delete” button once to play or delete this music/melody.

E Synchronize: After the 8-melodies Play List is built, you have to synchronize it to the door chime by click the “Sync” button in the centre once and the door chime will store the music/melody on the Play List in the memory. “Synchronize is finished” icon will pop up for confirmation.

Note: Always synchronize your door chime before disconnect the USB cable.

F Memory: The door chime has 8 MB memory to store (Approximates 8-9 minutes) the music/melodies. The memory bar is showing the percentage of memory has been used.

G Disconnect: Disconnect the USB cable then the door chime is ready to use.

H Melody Selection: Select one of the melodies on your play list as your door chime sound by press the melody selector switch inside the push button (refer to Melody Selection), after then the door chime will only play the selected melody.

DOOR CHIME OPERATION:

Press the button on the Push Button unit once, it sends a wireless signal to the Door Chime which will sound. The sound will stop as soon as the melody ends. For repeat sound, press the button again. Hold the button in will NOT repeat the sound.

ADJUST THE VOLUME:

Rotate the rotary volume knob on the back of the door chime unit to adjust the sound level.

IMPORTANT: Turn the volume knob with care, do not use excess force as it may break it.

CONFORMATIES:

CE



RECYCLING:

Do not discard the unit with household waste, but in compliance with currently enforced regulations.

In compliance with the Directive 2002/96/CE relative to waste from electrical and electronic equipment (WEEE) this product must be recycled.

IMPORTANT:

- Door Chime unit is designed for indoor use only.
- Do not mount the Push Button onto any metal surface or UPVC doorframes, as this will reduce the operation range.
- Do not expose either unit directly to rain or immerse in water.
- Do not mount either unit close to fireplace or expose to high temperature.
- If leaving the chime for long periods, remove the battery from compartment to prevent leakage.
- Dispose of old batteries in accordance with the relevant legislation.
- **CAUTION:** Danger of explosion if battery is incorrectly installed or replaced.
- **IMPORTANT:** There are no serviceable parts in the units, do not attempt to repair it.
- **NOTE:** Extreme (Hot & Cold) temperature may shorten the operating range; re-locate the chime unit if necessary.
- **Note:** The product function may reset itself when it is subjected to electrostatic discharges. Just follow the instruction described in this manual to set the function again for normal operation.

USER HINTS:

If the door chime unit does not sound, please check the following:

- Flat batteries in either Push Button or Door Chime units – change the batteries.
- Wrong battery polarity in either Push Button or Door Chime units – reinsert the batteries.
- Both Push Button and Door Chime units are not on the same operation codes – reset the code (see digital code set up).
- B/O door chime unit does not register any operation code after batteries changed – reset the code (see digital code set up).
- Units are out of range – Operate the door Chime unit within the operation range.
- Can not store music in the Play List – If the Play List already has 8

melodies stored, you have to delete 1 or more melodies from the Play List to make room before transfer the edited/new melody to the Play List and the Play list can only store 8 melodies (max).

- No melody/song stored in the Door Chime unit - Synchronize your door chime before disconnect the USB cable.

R2 Device - device where the sound output is created by the initial operation of the control and where the period of sound output continues for the designed duration irrespective of condition of the control.

For more information - www.ensonordic.com

01.06.2017

TECHNICAL DATA:

Push Button unit

Power : 2 X 1,5V alkaline LR14 - C (not included)

Door chime unit:

Power: 1 x CR2032 (Included)

Range: Up to 100 meter

Selectable Tone: Total Eight (8) tones available

Digital Code: Pre-set, one of two hundred fifty six (256) possible digital codes, random setting and non-selectable

Volumen: 85 dB

Operation

temperature: Door Chime +10° – +40° C
Bell Push -10° – +35° C

Memory: 8MB

Files supported: All MP3 format (Not iPod MP-3 filer) V1 - MPEG Version 1, V2- MPEG Version 2 & Version 2,5, L1 - Layer I, L2 - Layer II, L3 - Layer III

Sampling rate frequency index (values are in Hz) bits:

MPEG1	MPEG2	MPEG2.5
44,100	22,050	11,025
48,000	24,000	12,000
32,000	16,000	8,000

Supports all WAV files

System supported: Microsoft 2000, XP, Vista, Windows 7, 8 & 10

Accessories: Extra Bell Push - Item no.32408
Repeater - Item no. 32601 & 32CL05